

Module 5 Workbook | **Delivery**



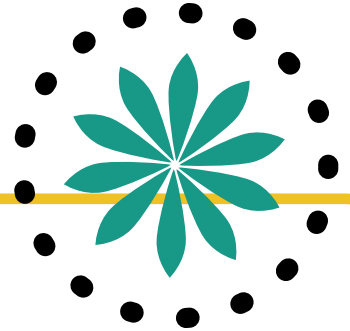


Thank you to everyone for participating in our first Fit for Retrofit programme.



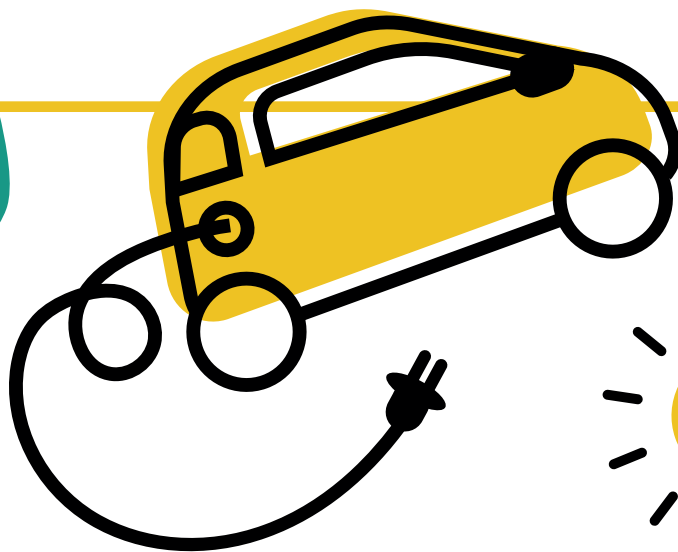
This project is fully funded by the UK Government through the UK Community Renewal Fund





“Our vision is a world where every home is warm, healthy and low carbon. To deliver 27 million retrofits over the next 30 years in the United Kingdom, we need an army of retrofiters in professional, technical and skilled craft roles. Our mission is to enable this.”

David Pierpoint, The Retrofit Academy



MODULE 5 | DELIVERY

5

Aimed at asset managers and project managers.

IT IS DESIGNED TO: Kick start your delivery plan and it will help with,

- Retrofit pilot projects and Funding such as SHDF, LAD, ECO etc
- Extracting value from pilots by making the most of the learning
- Building energy impact thinking into every asset plan element
- Understand how tweaking specifications can save us time and money later



Starting Point

Let's Discuss

Part of the Fit for Retrofit programme is a self-reporting diagnostic that enables you to see your organisation's beginning and end regarding Retrofit. These are the questions relevant to this module. The whole organisation score will be shared with you in the session, and there will be a revisit of the questions in the group coaching session at the end.

Does every section of your organisation know about the retrofit challenge?

Does every section understand its role in the retrofit challenge?

Does every section know the relative priority of retrofit to other activities?

Does every section understand how retrofit fits with other objectives?

Does every section have a budget?

Do you have specific retrofit managers?

Do you have qualified Retrofit Assessors and Retrofit Coordinators?

Have you delivered retrofit projects?

Have you developed government funded retrofit projects?



Introduction

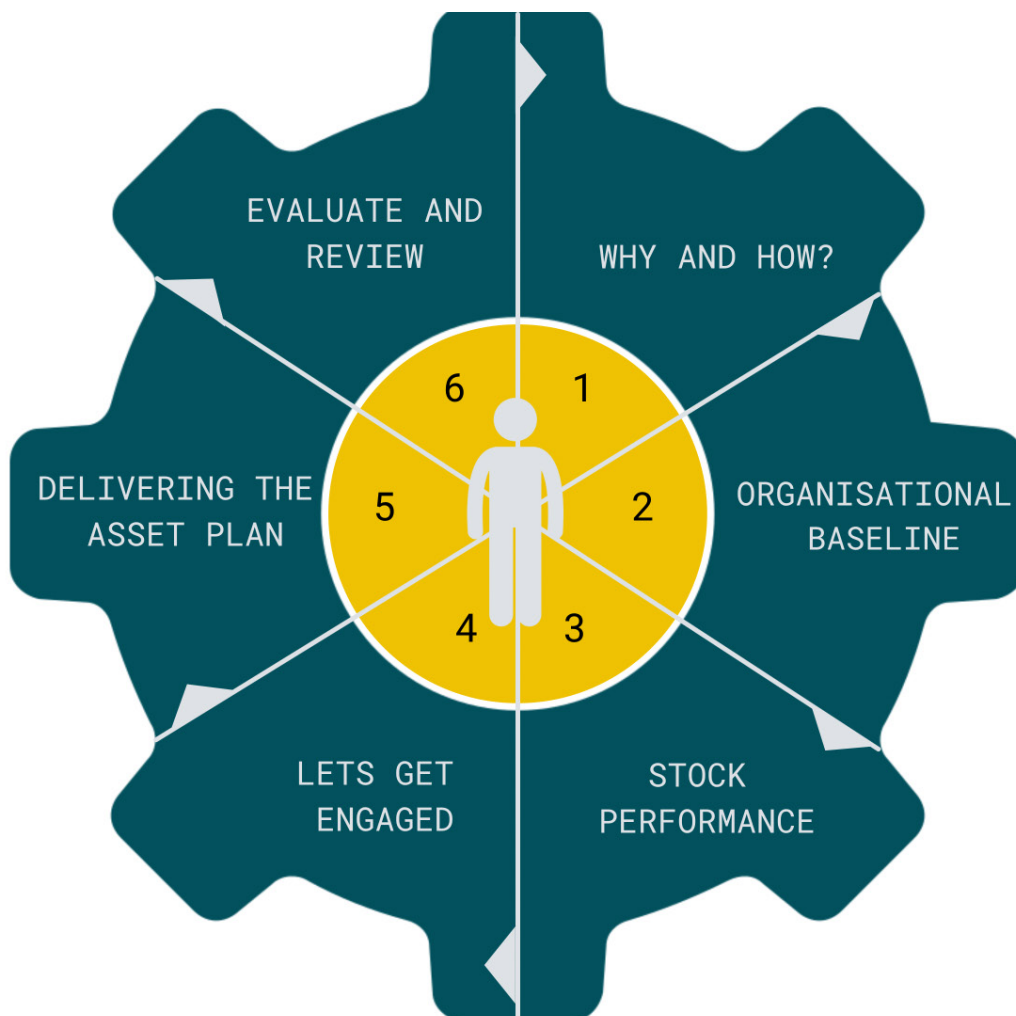
Fit for Retrofit is an interactive programme covering the areas required to be 'organisation ready' for Retrofit.

It differs from other training programmes in that it does not just focus on the asset team and their role but enables cross-organisational understanding and action. Different people from different parts of the organisation will attend the different modules to explore the competencies and knowledge required for their business area.

Any building design, be it new or Retrofit, should be preceded by understanding the user's requirements and habits. This is critical in properties that we call homes. Social landlords also carry an ethical as well as governance responsibility to consider the wellbeing of their tenants.

If you start the asset lifecycle with a deep understanding of the residents' needs, capacity, and behaviours you will produce a more effective plan. This will reduce the risk of residents decommissioning technologies or interventions, e.g., turning off heat pumps and taping up ventilation grills, and increase the effectiveness of the measures, e.g., less condensation, using solar power generated at the correct times. Leading to greater resident satisfaction and fewer enquiries and complaints.

The stages to complete a successful retrofit programme



Delivery Overview

Primary aims:

Module 5 has 2 primary aims

1. Encourage you to see 'energy' work in a wider context.
2. Help you to take a 'next step' – or steps!

Key content:

Your Drivers

This section is really about trying to put 'energy' work into context. What are the longer-term goals – because these should guide immediate choices.

Challenges

Big picture – like the role of social housing in the UK's carbon emission reduction targets.

What goes wrong in retrofit – why we must do better and deliver more robust, higher quality retrofit going forwards. Better understanding of what goes wrong can help to avoid the pitfalls.

Pilots and Energy Projects

Preparing for grant bids (and projects).

Putting pilots/ projects into the context of long-term goals and trying to ensure maximum learning to feed into everyday asset management.

PAS 2035

Mainly how to really start to make PAS 2035 work for you. How to start to engage with PAS 2035.

Some PAS 2035 basics (roles and stages)

Introduction to the next level – 'interpretations' and getting alignment of expectations!

Core Business

Building energy goals into everyday asset management to marginalise costs.

Trigger points – when everyday works provide an opportunity to help with energy targets.

Examples (interventions, 'specification').



Questions and Interactions

Task: Your Context

SAP Band 'C' by 2030

EPC ENERGY RATING	TARGET IN PLACE	FULL PLAN - HOW	COSTED	FUNDED
SAP 'C' by 2030	Y/N	Y/N	Y/N	Y/N

Task: Primary Driver

Which of the below is your primary driver for energy retrofit works?

You can number them in order if you really want to – but do pick a primary driver.

IF you have very strong drivers and targets for two they could both be 'primary' (and see below about these being built into governance).

DRIVER

PRIMARY /(RANK)

FUEL POVERTY	
TENANT HEALTH	
CLIMATE/ ENVIRONMENT/ CO ₂ EMISSIONS	
COMPLIANCE REGULATION (I.E. SAP C BY 2030)	
BECAUSE THERE IS GRANT AVAILABLE	
OTHER	



Task: Governance

Policy/Strategy/Action Plan

'Energy' targets can live in different places. Which of these do you have and which drive your retrofit activities the most. This would 'typically' tie in with the question above – but this is not necessarily the case.

TOPIC	POLICY	STRATEGY	PLAN
FUEL POVERTY			
TENANT HEALTH			
ENERGY			
CLIMATE			
ENVIRONMENT			
CARBON			
COMPLIANCE			
OTHER			



Task: Senior Support

Where do you have senior support?

'SPONSOR'

Senior Manager	YES / NO
Director	YES / NO
Councillor (with portfolio)	YES / NO / N/A
Other	YES / NO
'Its just me on my own!'	YES / NO

Task: Energy Performance

DO YOU KNOW?

TARGETS

Average SAP	
Now	
1 Year	
3 Years	
5 Years	
10 Years	
2030	
2050	



DO YOU KNOW?

TARGETS

Minimum SAP Target

Now

1 Year

3 Years

5 Years

10 Years

2030

2050

HOW MANY?

NUMBER

SAP G

SAP F

SAP E

SAP D

SAP C

SAP B

SAP A



Details!

HOW MANY?

WHAT

Uninsulated Walls

Lofts not at 300mm or more

Heat Pumps Installed

Gas Boilers

Electric Heating

Biomass

Coal

Oil

What is an acceptable tenant energy bill?

Do you have an 'energy' target (i.e. space heating demand of x)



Task: **Your Next Energy Project**

These questions are intended to 'challenge' you to think about how current or future 'energy' projects 'fit' with your bigger picture context and how the learning from them can deliver maximum benefit for your energy goals.

What is your live or next project?

Why are you doing it?

Are you ready?

Targets?

What will you learn?

How will you know if it works?

How does learning feedback in to everyday?



Task: PAS Roles

Do you have any of these in-house?

QUALIFIED AS	HOW MANY?
Retrofit Coordinator	
Retrofit Assessor	
DEA	
Retrofit Designer	
Retrofit Advisor	
Retrofit Evaluator	
Understanding Domestic Retrofit	
Other TRA 'bootcamps' – short (4hr)	
Other TRA 'bootcamps' – long	



Task: PAS 2035 Roles | Costs

COST OF A RETROFIT COORDINATOR

£85 (apprx)

£850 (apprx)

Somewhere in between

North of £850

Stupid question

And how much is Retrofit Design?

Cost?

RETROFIT COORDINATOR - AND DESIGN

Our Retrofit Coordinator will:

Ask the Retrofit Designer to confirm design is PAS 2035 compliant.

Check a sample of the construction details with pertinent questions about references and requirements.

Check and validate all construction details.

I have no idea!



Task: PAS 2035 Roles | Costs

RETROFIT COORDINATOR - AND INSTALLATION

Our Retrofit Coordinator will:

Visit every home at least once.

Visit site once per week.

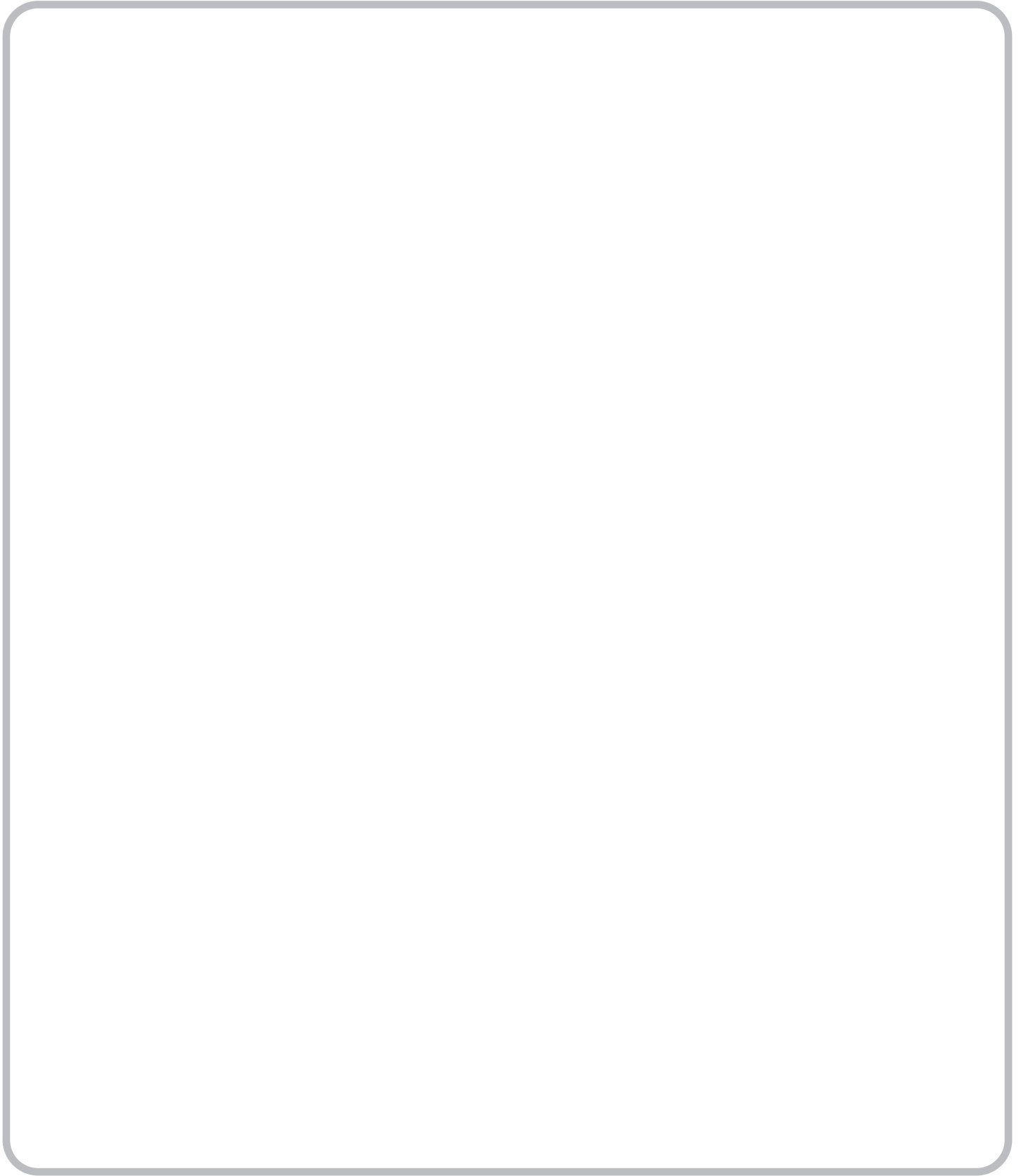
Visit site once per month.

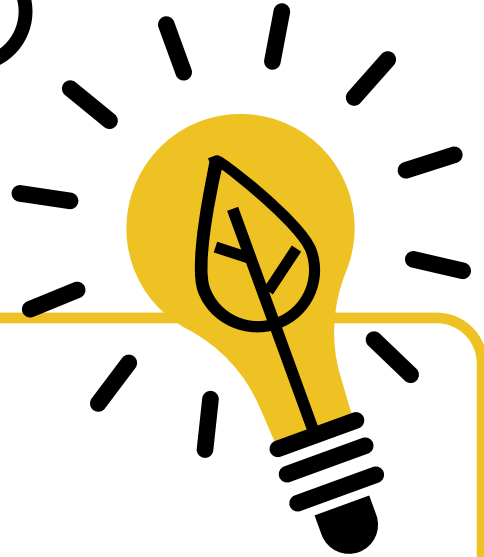
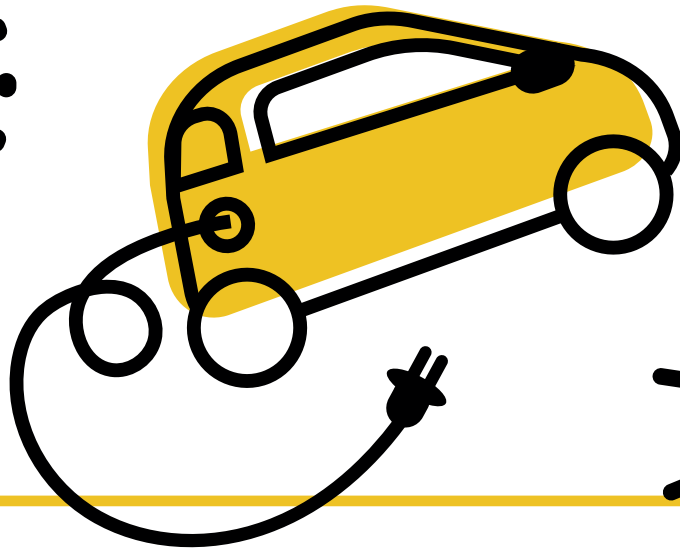
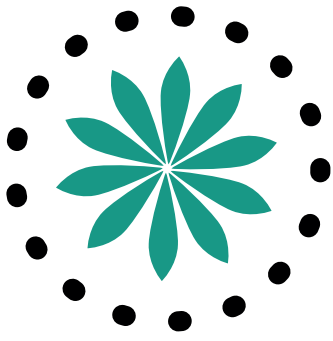
Never leave their office.

I'm sorry, I haven't a clue.



Notes





DELIVERY

Execution is the ability to mesh strategy with reality, align people with goals and achieve the promised results

Lawrence Bossidy





T: 0330 0557 629

E: info@retrofitacademy.org

W: www.retrofitacademy.org

A: Barn 4, Dunston Business Village, Stafford Road, Stafford, ST18 9AB



HM Government

This project is fully funded by the UK Government through the UK Community Renewal Fund. The UK Community Renewal Fund is a UK Government programme for 2021/22. This aims to support people and communities most in need across the UK to pilot programmes and new approaches to prepare for the UK Shared Prosperity Fund. It invests in skills, community and place, local business, and supporting people into employment.

For more information, visit <https://www.gov.uk/government/publications/uk-community-renewal-fundprospectus>

February 2022